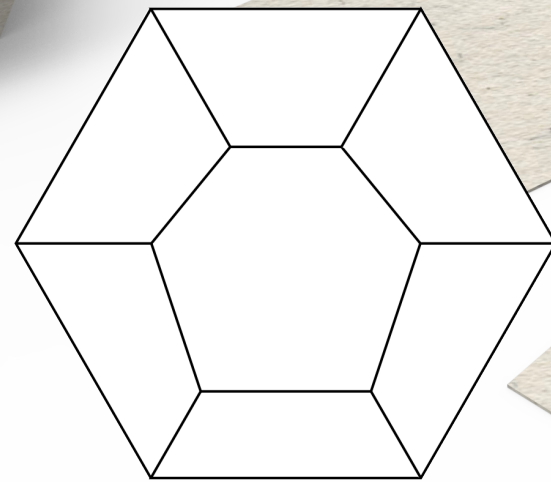
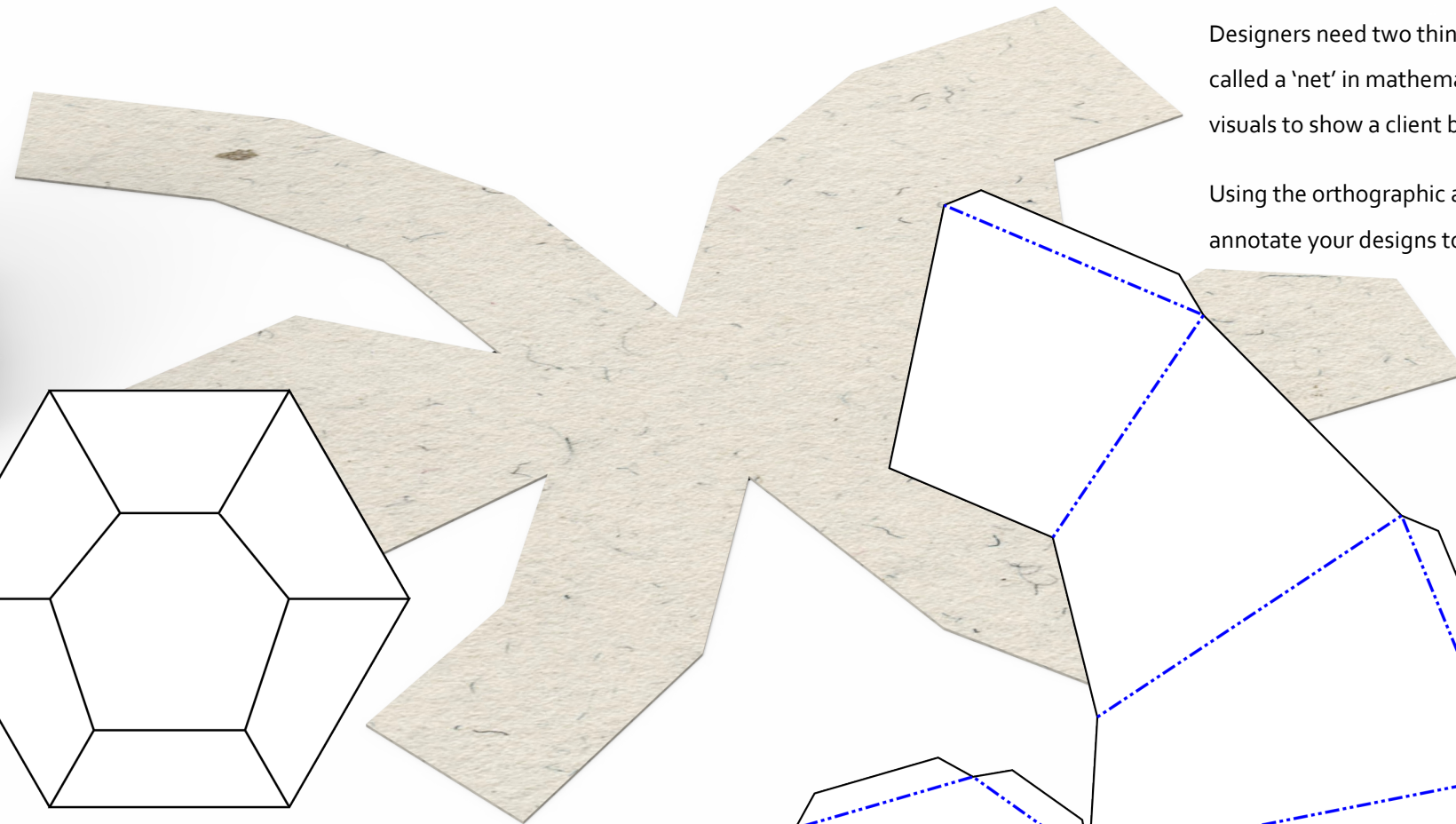


Packaging Concept

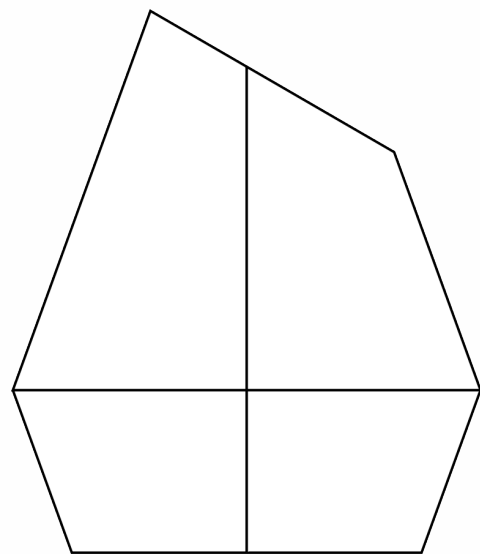
The graphic design for packaging can be difficult to create. The designer must create graphics that will appeal to a target market, convey a message and attract interest. Certain 'panels' may also need to have core information.

Designers need two things. An 'Orthographic Drawing' and a 'Surface Development' - called a 'net' in mathematics. Using this information, the designer will create simple visuals to show a client before progressing the design to DTP.

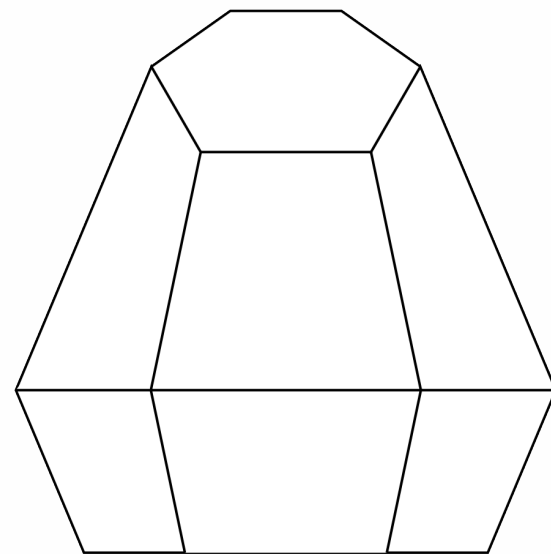
Using the orthographic and surface developments below, create a visual. You must annotate your designs to justify any element you produce.



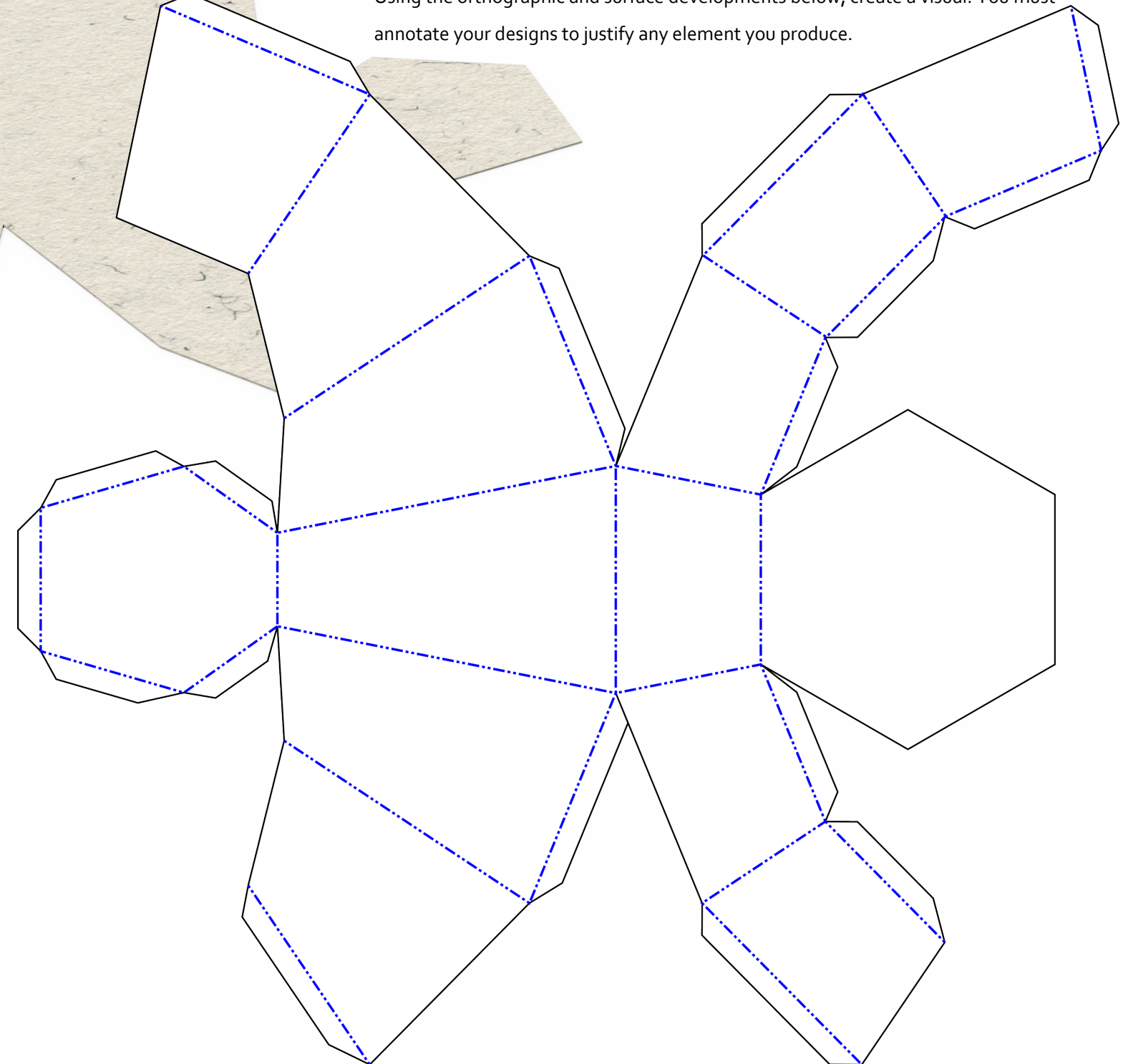
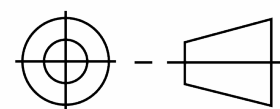
PLAN



END ELEVATION



ELEVATION



SURFACE DEVELOPMENT