



NAME: _____

CLASS: _____

TEACHER: _____

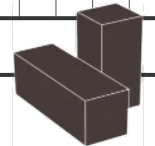
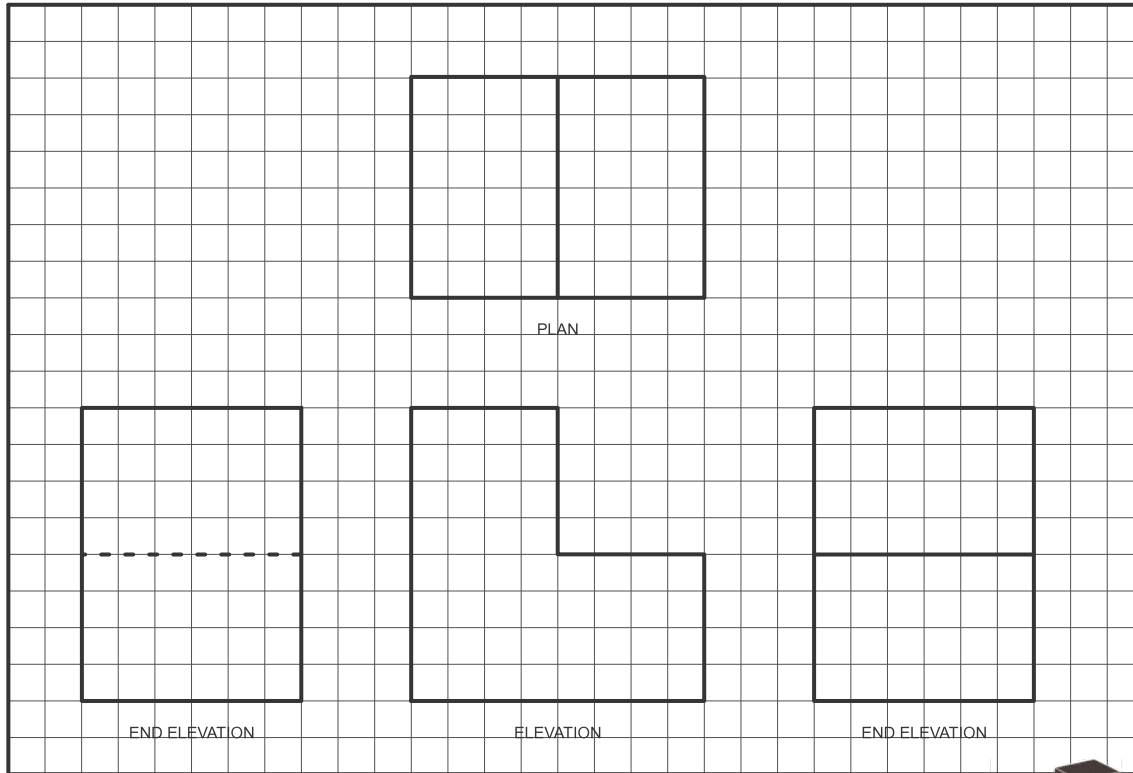
CHALLENGE
NUMBER:

2

ISOMETRIC *sketching*

GRADING

PROJECTION	A	B	C	D	F
LINE QUALITY	A	B	C	D	F
ACCURACY	A	B	C	D	F
DIMENSIONING	A	B	C	D	F



QUESTION:

Describe three advantages of CAD over manual drawing boards.

(3 MARKS)

