



NAME: _____

CLASS: _____

TEACHER: _____

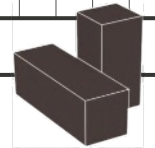
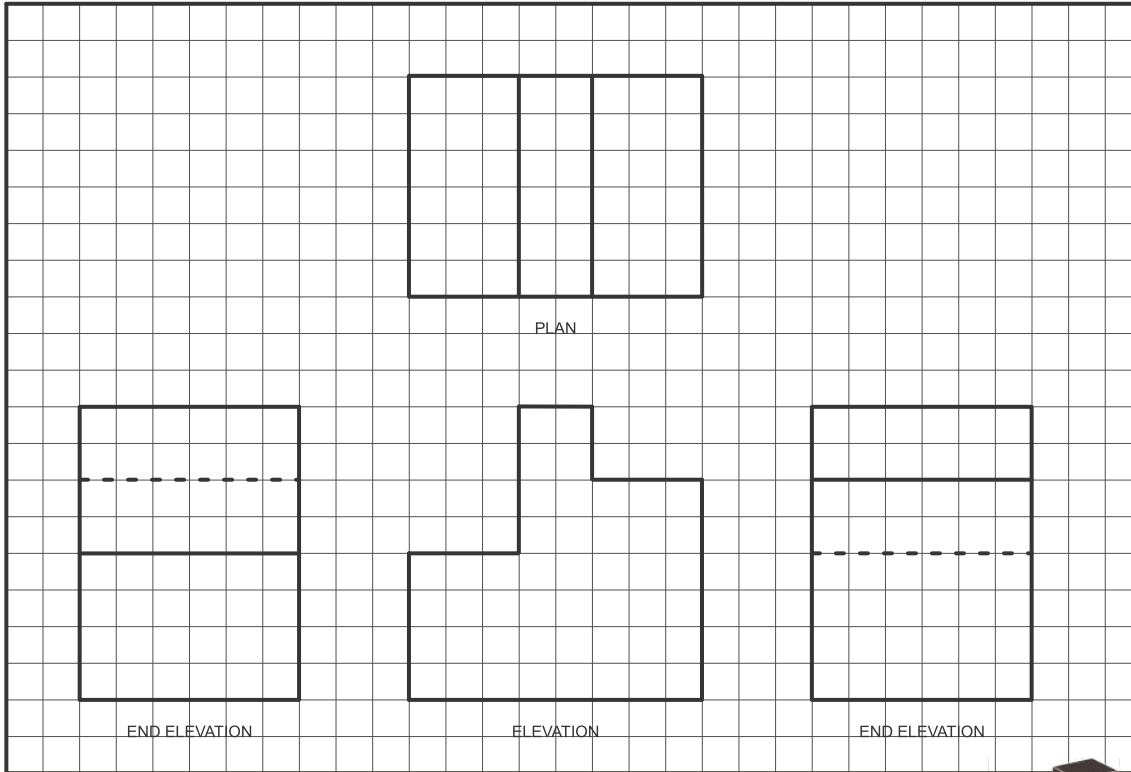
CHALLENGE
NUMBER:

4

ISOMETRIC *sketching*

GRADING

| | | | | | |
|--------------|---|---|---|---|---|
| PROJECTION | A | B | C | D | F |
| LINE QUALITY | A | B | C | D | F |
| ACCURACY | A | B | C | D | F |
| DIMENSIONING | A | B | C | D | F |



QUESTION:

Describe the difference between 3D and 2½D.

(2 MARKS)

